



Ministry Spotlight: Light of Grace

On June 16th St. Andrews was blessed to have Light of Grace lead us in worship. They proclaimed the many names of Jesus through Word, song, signing, and liturgical dance.



From the Pastor:

Storage

by Mary Oliver

When I moved from one house to another there were many things I had no room for. What does one do? I rented a storage space. And filled it. Years passed. Occasionally I went there and looked in, but nothing happened, not a single twinge of the heart.

As I grew older the things I cared about grew fewer, but were more important. So one day I undid the lock and called the trash man. He took everything.

I felt like the little donkey when his burden is finally lifted. Things! Burn them, burn them! Make a beautiful fire! More room in your heart for love, for the trees! For the birds who own nothing—the reason they can fly.

I wonder if you can relate to Mary Oliver's thoughts on moving, the things we keep, and the things we let go of. Oliver was 80 years old when she first published that poem. I'm not in quite the same place she was. I think I'm somewhere between renting a storage unit and burning it all.

After spending a few weeks dividing and

packing up a shared home of twenty years, I can relate to this idea. As I sorted each closet and drawer, decisions had to be made. Who keeps what? What is worth keeping? What is worth trying to sell or find a new home for?



One box moved from my childhood home to a new house a mile away in high school, then on to two homes in Little Rock before arriving in Decatur. I haven't used the contents since I was a pre-teen. Most people would recommend getting rid of whatever is in that box. But I look forward to using the teacup collection carefully stored in the box, each cup and saucer a birthday gift from my paternal grandmother. She told me she wanted me to have a nice collection to host gatherings as a grown-up. Unfortunately, a few cups didn't survive childhood tea parties, but I think I might be grown-up enough now to be trusted with them!

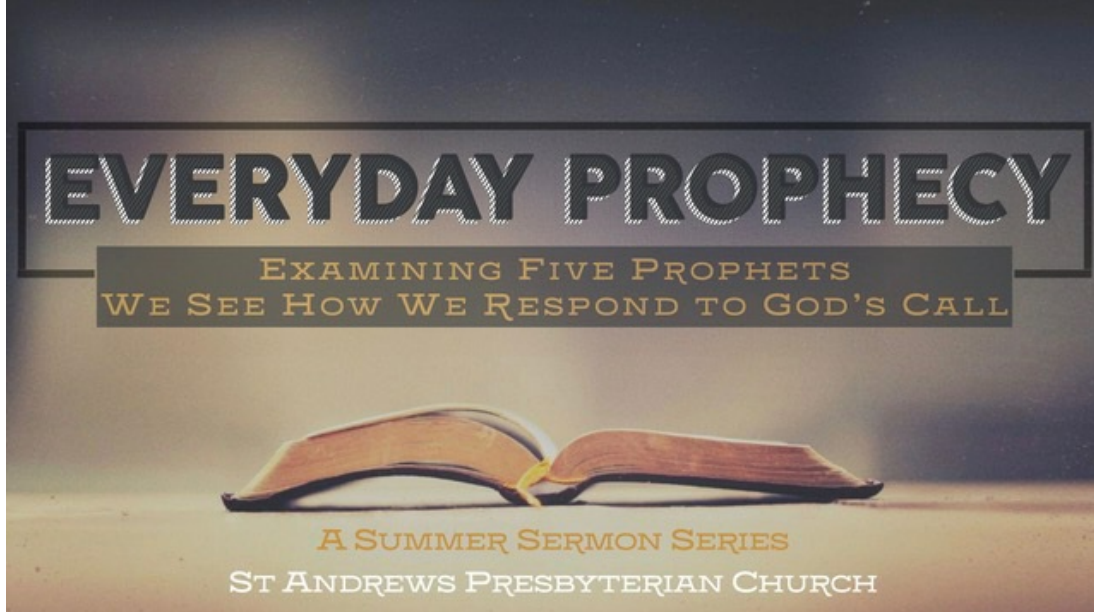
There were also plenty of things that I thought were so important to keep holding on to, but when it came to moving them and thinking about finding a place for them in a new home, I realized they'd outlasted their usefulness. And so, I let those go.

The kids and I have moved into a townhome within walking distance of our former home. Our new address is available from the office or in the ChurchLife App. Jonathan will stay in our previously shared house for the foreseeable future. There is still so much unpacking and settling in to do. It will be a while before I find the right furniture to fill the space and figure out where to hang things on the walls. And there is still much grieving to do for the things I never wanted to let go of, or see come to an end.

For now, I will hold on to both things—the grief and the liberation. Because, with the heavy physical and emotional lifting of a move, another burden is lifting. As Oliver wrote, I hope and pray that God is making room in our hearts for more love!

-Camille





Summer Sermon Series: Everyday Prophecy

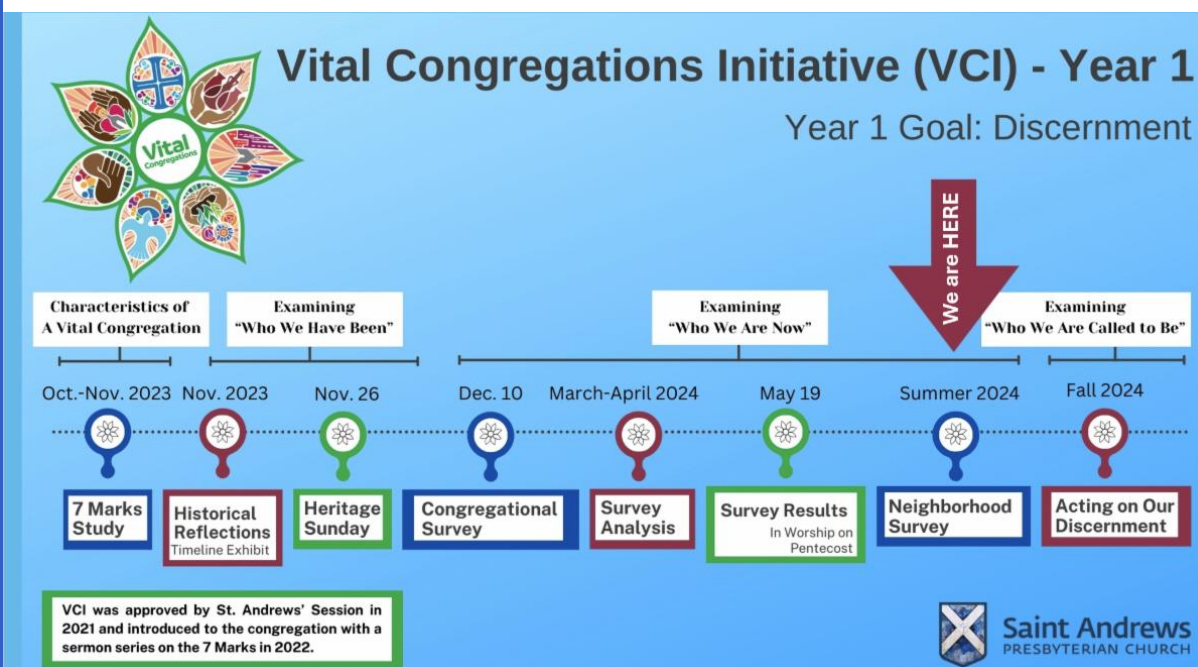
July 7 - Ezekiel: React or Respond - Ezekiel 2:1-5

July 14 - Amos: On-the-Job Training - Amos 7:7-15

July 21 - Jeremiah: Looking for Good Shepherds - Jeremiah 23:1-6

July 28 - Elisha: More Than Enough - 2 Kings 4:42-44

August 4 - Elijah: Learning to Listen - 1 Kings 19:9-18



Vital Congregations Initiative (VCI) Neighborhood Survey Members to Record Community Encounters by LaVerne Byas-Smith

At Brunch Church in May everyone got a chance to review the results of the St. Andrews Congregational Survey – our self-assessment made in December (2023). The Congregational Survey began answering the question, “Who are we now?” (see timeline) Equally pertinent to that question is our physical location and our relationship with the community. So, our next step in VCI is the Neighborhood Survey.

With our Neighborhood Survey we seek greater understanding of what constitutes our community, who are its people, and what ways we are in relationship with them. Designed to be experiential it needs everyone’s participation.

Church members and attendees will gather the data for this survey from now until Labor Day by recording two types of encounters you have with community members -- observations and conversations. You might record, for example, a random observation you make of a person or group of people in a specific circumstance. Or, you might

note a casual conversation you have with someone while out doing errands in the community. You'll document your encounters on the Neighborhood Encounter Cards which you'll find on the sign-in table in the church narthex, and at the church office. The cards are double-sided: record notes from conversations on one side, and of observations on the other. You will complete only one side per encounter.

For example, one day you witness a family gathered at the park and record that as an Observation. Another day you strike up a conversation with someone at the post office – you'll record this as a Conversation. Below illustrates how you would complete these two different encounter cards:

<p><small>Due September 8, 2024</small></p> <p style="text-align: center;">OBSERVATION</p> <p><small>SAPC Community Encounter Card 2024</small></p> <p>--Where are you located at the time of this observation? <u>Henderson Park Playground</u></p> <p>--Who do you see? What kinds of people? <u>large family? Grandma, Mom + Dad? 3 kids</u></p> <p>--What activities are they engaged in? <u>Watching kids play on playground, eating sandwiches</u></p> <p>--What, if anything, stands out about the person/people you have observed? <u>Dad stood off to side not engaged with kids, smoked. Mom's nervous about little kid on playground equipment</u></p> <p>--How might this person's experience be improved? <u>A toddler structure</u></p> <p>--Who is missing? <u>A grandpa?</u></p>	<p><small>Drop completed cards in collection box located in narthex.</small></p> <p style="text-align: center;">CONVERSATION</p> <p><small>SAPC Community Encounter Card 2024</small></p> <p>Background: Where were you when this conversation took place? <u>Tucker Post office</u></p> <p>General Description of person you spoke with: (age, gender, ethnicity) <u>70's male white</u></p> <p>Questions you might ask: Do you live in Tucker? <u>yes</u> ... Where is your community? <u>Winding Woods</u></p> <p>--How long have you lived here? <u>50 yrs</u> ... What do you like about living there? <u>quiet, close to city but still small-town feel</u></p> <p>--Is there anything you wish your community had?</p> <p>--Do you know your neighbors?</p> <p>--Where do you congregate with your friends?</p> <p>--Do you have kids? ... Where do they hang out?</p> <p>--Heard of St Andrews Church on Lavista Rd? <u>yes</u> ... Ever attended an event there? <u>Lessons in Carols</u></p> <p>--What was it?</p> <p>Other notes from conversation:</p>
---	--

Please do your part in helping us survey our community by completing at least three encounter cards. Drop your completed cards in the "Neighborhood Encounters Box," also in the narthex. Our goal is to collect at least 200 Encounter Cards by September 8th.

Through our observations and conversations in the community, we hope to learn more about who our neighbors are. And what needs they might have that we are currently meeting or can potentially meet in the future. When we amass all of these experiential impressions provided by your Encounter cards, we hope to be able to paint a textured portrait of the community of which St. Andrews is a vital part. The resulting Neighborhood Analysis will complete our answer to "Who are We Now?" We can then move to the third question, "Who are we called to be?" and the season of Discerning God's will for our future.

Treasurer's Report

Jane Thomas, Treasurer

In May our income was \$40,039, and our expenses totaled \$43,097.47. Year to date, our income is \$165,396.75 and expenses are \$187,530.80. So, we are in the red by \$22,134.05.

Clifton Sanctuary Ministries

There are spots available for upcoming dates to bring food to Clifton. For more information or to sign up, [click here](#). This ministry is a very easy thing to do while maintaining your social distancing since meals are dropped off on Clifton's front porch after calling ahead to let them know when you are coming.

A group gathers on the 4th Sunday of each month after worship to make lunches for Clifton. If you are interested in helping, [contact Phyllis Bearden](#).



SAPC Staff

Pastor

Rev. Dr. Camille LeBron Powell
(ext 106)
camille@sapctucker.org

Coordinator of Congregational Vitality

LaVerne Byas-Smith (ext 109)
laverne@sapctucker.org

Director of Music

David Lukens (ext 118)
dlukens@sapctucker.org

Associate Director of Music/Organist

Edward Weaver (ext 118)
ejweaver@bellsouth.net

Director of Older Adult and Caregiver Ministries

Pat Baker (ext 111)
pat@sapctucker.org

Director of St. Andrews School

Our congregation feeds the men at Clifton Sanctuary Ministries on the fourth Sunday of every month.

Lonnette Bruce (ext 120)
sasdirector@sapctucker.org

Office Manager
Gretchen Perkins (ext 102)
office@sapctucker.org

Financial Administrator
Helen Hoang (ext 104)
finance@sapctucker.org

Collection Project

The Presbyterian Women are continuing to collect adult diapers, poise pads, maxi pads, and tampons at meetings and in the Narthex which will go to NETWorks. All are invited to participate.

Visit our
website



Flowers for Worship

If you would like to bring flowers for Worship, [Click here](#) to sign up; July through September dates are now available. The flowers can be from your yard or the store.

Older Adult and Caregiver Ministries- Summer Events

by Pat Baker

Please RSVP by emailing Pat Baker if you are interested in the following programs or events, pat@sapctucker.org

Everyone is welcome to join the next day trip, Tuesday July 16th to the National Center for Civil and Human Rights in Midtown. We're planning to have lunch downtown at Tin Lizzy's on Andrew Young Boulevard around 11:00 am then we'll head to the Civil and Human Rights Center for an appointment at 1:00 pm. We'll be leaving as a group from the church at 10:15 am.

The National Center for Civil and Human Rights believes in justice and dignity for all--and the power of people to make this real. The center inspires visitors with immersive exhibitions, dynamic events and conversations, and engagement and education/training programs that you will learn about while we are there. It was opened in 2014 as a museum and human rights organization in ATL that inspires people to tap into their own power to change the world around them. The Center's iconic exhibition features the papers and artifacts of Dr. Martin Luther King, Jr.; the history of the civil rights movement in the United States; and stories from the struggle for human rights around the world today.

The cost for admission to the center is \$18.00 for persons 65+ and \$20.00 for adults under 65. This might be a great outing for you and your grandchildren. For youth 7-12 years old the cost is \$16.00. That cost for lunch at Tin Lizzy's is around \$12.00.

Tickets will be bought in advance so please email or call Pat Baker to reserve your spot. The deadline for letting Pat know you are going is July 11th. Please be prepared to pay Pat for your ticket on the day of the event. If you have any questions do not hesitate to contact Pat.

Looking forward to August...

On Wednesday evening, August 28th, at 6:00 pm, Alexa Murzyn, an audiologist from the Auditory Verbal Center, will be offering a session along the lines of Hearing Loss: How it happens and what we can do about it. Stay tuned for more details.

St. Andrews Back-to-School Carnival



Bounce Houses
Crafts
Yard Games



Petting Zoo
Hot Dogs
and more!

August 10
10a-1p

St. Andrews Presbyterian Church
4882 Lavista Road, Tucker, GA

Back-to-School Carnival

The Committee is busy making plans for our annual Back-to-School Carnival – less than six weeks away! Building on the record attendance of last year, we're planning new exhibits and expanding our crafts offerings. We're so excited to welcome more of the community onto our grounds this year. This free event serves local families with fun outdoor activities, crafts, exhibits, and a free hotdog meal as a joyous celebration of the end of summer vacation. We invite you and urge you to invite neighbors and friends to our Back-to-School Carnival on Saturday, August 10 from 10:00 a.m. – 1:00 p.m. We'll be needing more volunteers this year, so be on the lookout for the Sign Up email.

Fidelis Sunday School Class

Everyone is welcome to join the Fidelis Sunday School Class, which meets at 9:00 am on Sunday mornings in the Library, and on Zoom (password fidelis).

The class uses *The Present Word* series of books. This Summer, the study theme is "Hope in the Lord" and in July the focus is Expressing Hope. Contact Deanna Hall for more information.

Giving

Online giving applies to your pledge just the same as a paper check. Secure online contributions can be made by clicking this link, or checks can be mailed to: SAPC, 4882 Lavista Rd, Tucker, GA 30084

GIVE NOW

through the Presbyterian Mission Exchange

Revelation Bible Study

We are going through Revelation verse by verse. Please join us in the youth room Sundays at 2:00 pm as we delve deeper into the material by Bruce Gore, facilitated by Arch Baker. Everyone is welcome!

39ers June Meeting

20 folks gathered for lunch and fellowship last Tuesday at the Red Lobster by Northlake Mall. Everyone is welcome to attend the monthly lunches of the 39ers, held on the last Tuesday of the month at Noon at various local restaurants.

July Birthdays

- 1 Pat Blair
- 4 David Darnell
- 8 David Lukens
- 9 Kayla Chen, Mike Rometo
- 10 Jeff Pattillo
- 12 Deby Brooke
- 13 David McCowen, Lynda Robinson
- 14 Karen Burns
- 16 Natalia Papotto
- 18 Deanna McFarlan
- 19 Rachel Nelson
- 23 Lewis Gleason
- 25 Lily Powell
- 26 Jeff Jackson
- 27 Jared Papotto
- 30 Margaret Williams

July Anniversaries

- 6 Deby & John Brooke



Tucker Independence Day Celebration

The City of Tucker will be hold their Independence Day events on Wednesday, July 3rd. [Click here](#) for a map of the festivities and list of road closings.



PDA: Disaster Relief and More

Did you know that Presbyterian Disaster Assistance responds to more than just tornadoes, hurricanes, earthquakes, fires, and floods? They also aid refugees and asylum seekers, as well as respond to incidents of public violence, like mass shootings.

When you are not sure what to do besides offering thoughts and prayers, supporting PDA is a way to do more. [Click here](#) to contribute directly to their efforts. To send a check, please designate where you want your gift to go on the memo line and mail to the following address:

Presbyterian Church (U.S.A.)
P.O. Box 643700
Pittsburgh, PA 15264-3700

The code to designate gifts to the humanitarian response in Ukraine is DR000165.

The code to donate to hurricane relief, including Hurricane Ian, is DR000194

To Donate:

Call 800-872-3283

[Click here](#) to donate online

Text 'PDA' to 20222 to donate \$10

St. Andrews Presbyterian Church
770-938-2833
office@sapctucker.org
sapctucker.org

Connect with us





Try email marketing for free today!